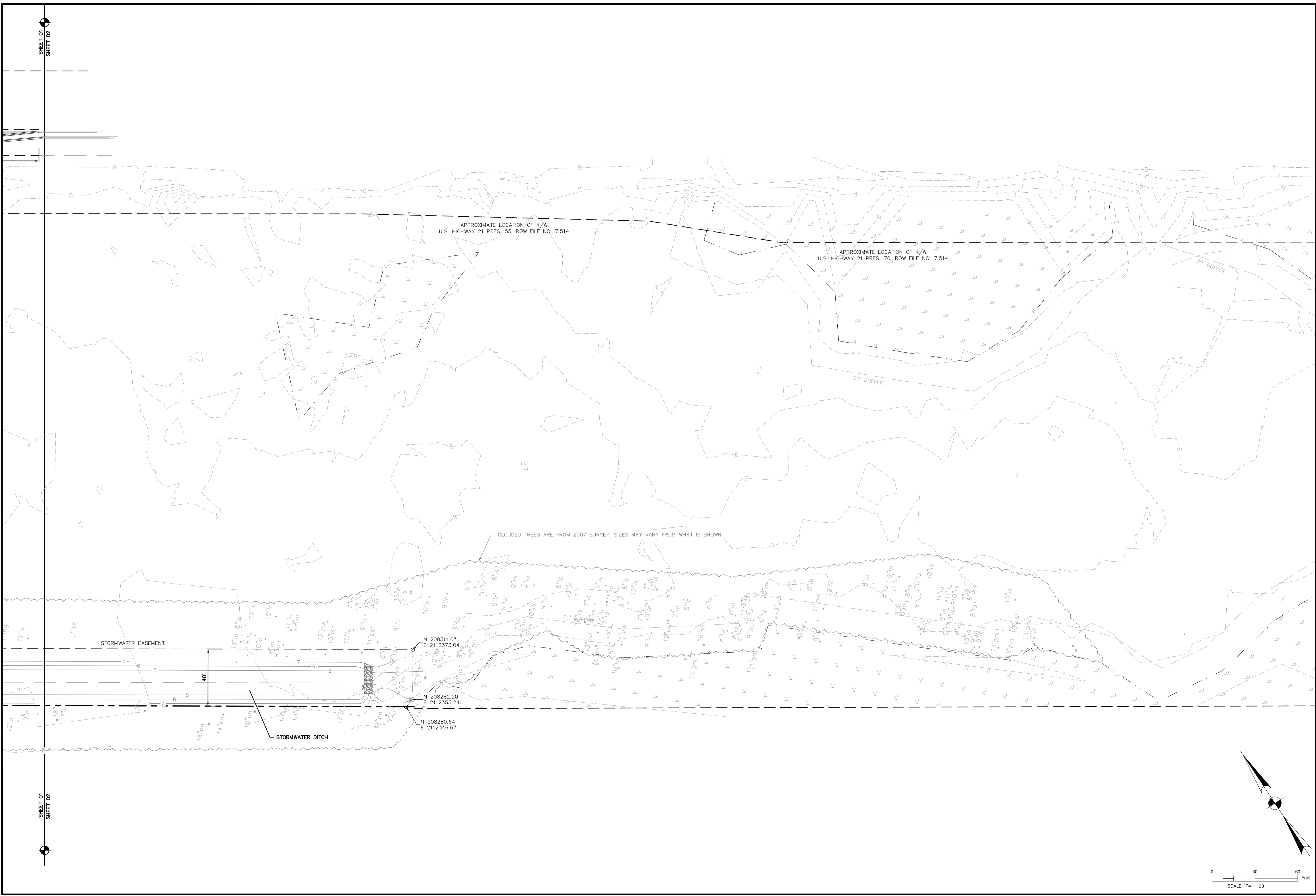


THE DOCUMENT AND ALL REPRODUCIBLE COPIES OF THIS DOCUMENT ARE THE PROPERTY OF WARD EDWARDS, INC. REPRODUCTION OR ALTERATIONS OF THIS DRAWING WITHOUT THE WRITTEN CONSENT OF WARD EDWARDS, INC. IS NOT PERMITTED.



SHEET 01
SHEET 02

SHEET 01
SHEET 02

APPROXIMATE LOCATION OF R/W
U.S. HIGHWAY 21 PRES. 55' ROW FILE NO. 7.514

APPROXIMATE LOCATION OF R/W
U.S. HIGHWAY 21 PRES. 70' ROW FILE NO. 7.514

CLOUDED TREES ARE FROM 2007 SURVEY, SIZES MAY VARY FROM WHAT IS SHOWN.

STORMWATER EASEMENT

STORMWATER DITCH

N 208311.03
E 2112373.04

N 208282.20
E 2112353.24

N 208280.64
E 2112346.63

Professional Engineer Seal for Paul M. Ward, No. 22816, State of South Carolina. License expires 12/31/2021.

NO.	DESCRIPTION	DATE
7		
6		
5		
4		
3		
2		
1		

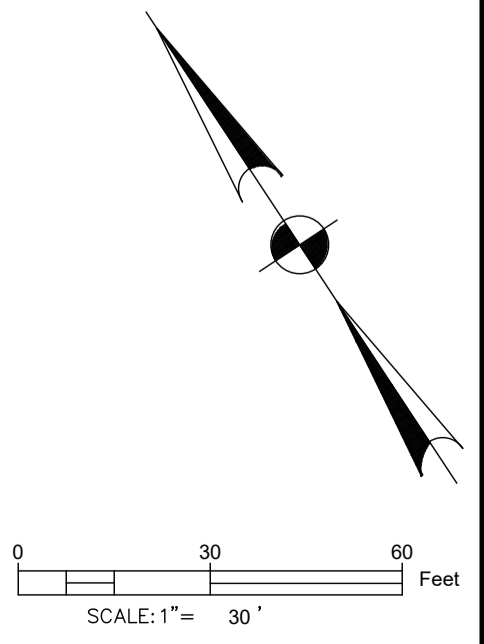
Ward Edwards
ENGINEERING
P.O. BOX 381, BUFFTON, SOUTH CAROLINA 29910
PH (843) 837-5750 / FAX (843) 837-2556
WWW.WARDEDWARDS.COM

AIRPORT FRONTAGE ROAD
BEAUFORT COUNTY, SOUTH CAROLINA
SOUTH CAROLINA
SITE LAYOUT PLAN

VERTICAL DATUM:
NAVD88

PROJECT #:	200249
DATE:	11/03/2021
DESIGNED BY:	AEP
CHECKED BY:	CPB

SHEET C402



IF THIS SHEET IS LESS THAN 22" X 34" IT IS A REDUCED PRINT. SCALE ACCORDINGLY

NOT FOR CONSTRUCTION